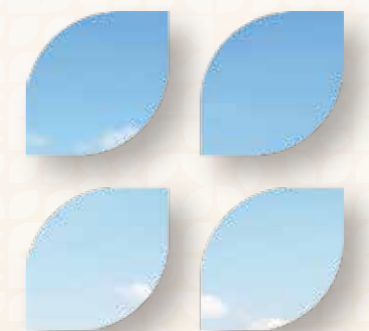
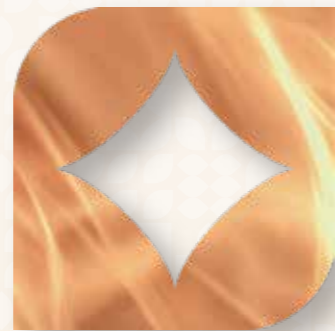


THE
ELEMENTS
MULUND WEST

The Essence of Life

The Harmony of Elements

Neevia Group presents the essence of the five elements into everyday living at the Elements, Mulund West. Water, Fire, Earth, Space, and Air come together to create perfect harmony in your home. Stability, freshness, warmth, flow, and openness, all balanced in every detail.



WATER

FIRE

EARTH

SPACE

AIR



Water

THE ELEMENT OF FLOW

Like water, life here flows with ease. At The Elements, the swimming pool with its inviting deck becomes your space to refresh, recharge, and stay in motion - a perfect balance of calm and energy.

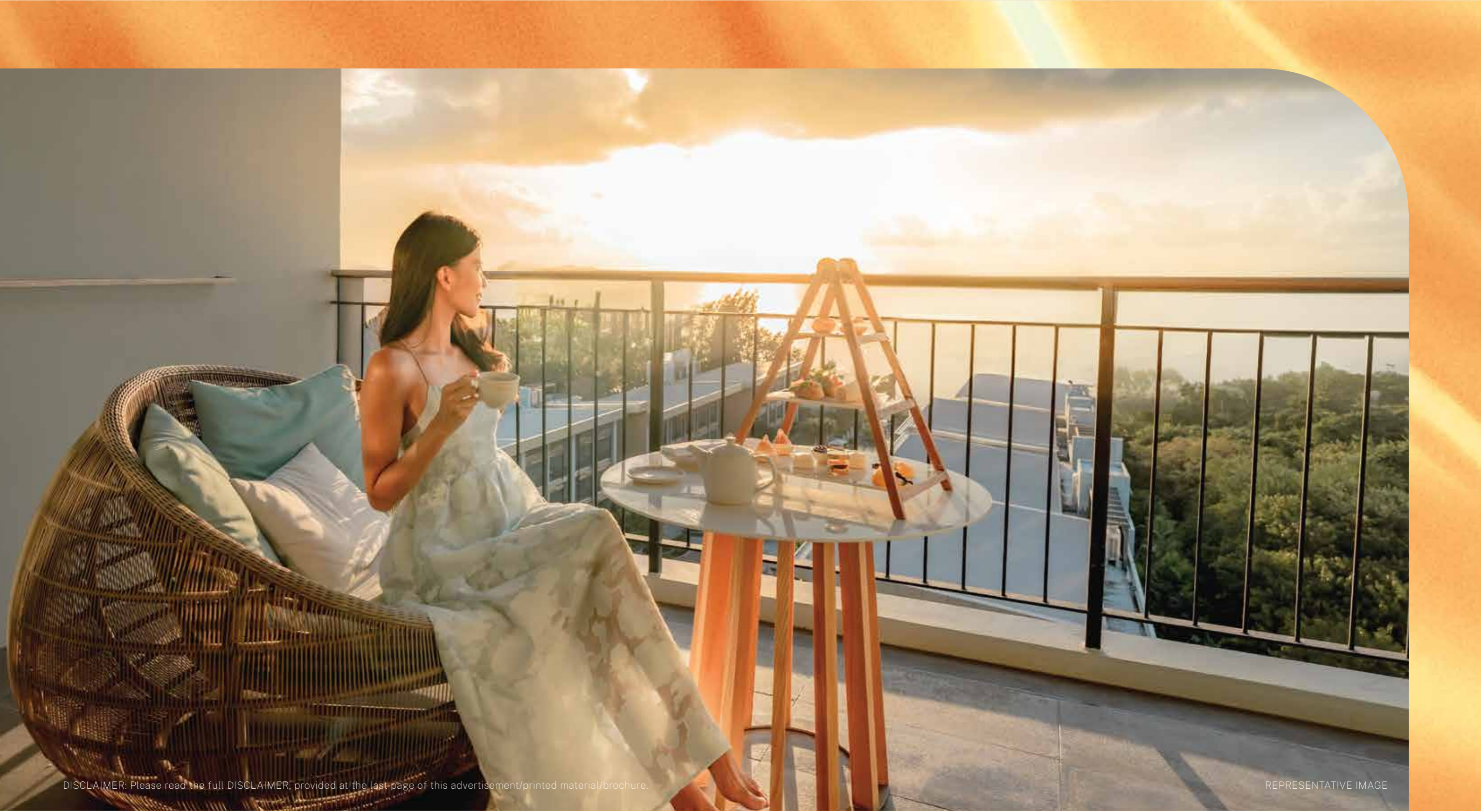




Fire

THE ELEMENT OF ENERGY

With east-facing views, every sunrise brings with it a promise - light-filled homes, vibrant energy, and the perfect setting for life's most meaningful moments.



THE ELEMENT OF GROUNDING

Surrounded by greenery, wellness spaces, and a community you can rely on, your home here offers the steady foundation of Earth. From a refreshing jog in the open air to the comfort of a secure neighborhood, everything here creates balance through stability.

Earth



DISCLAIMER: Please read the full DISCLAIMER, provided at the last page of this advertisement/printed material/brochure.

REPRESENTATIVE IMAGE



Space

THE ELEMENT OF INFINITY

With wide layouts and smart design, your home offers room for everything that matters. A space where you can connect with loved ones, enjoy quiet moments, and live in perfect balance between openness and privacy, elegance and comfort.



THE ELEMENT OF EXPANSE

At The Elements, every home is designed to flow with openness. From expansive balconies to refreshing ventilation, you're always surrounded by air, light, and freedom that keeps life in balance.



DISCLAIMER: Please read the full DISCLAIMER, provided at the last page of this advertisement/printed material/brochure.

REPRESENTATIVE IMAGE

MULUND

the Prince of Suburbs

Mulund combines the charm of greenery with the pulse of city life. With excellent amenities, reputed schools, healthcare facilities, and shopping hubs, it's an ideal destination for modern living.

A growing residential hotspot, it attracts families and investors seeking comfort, convenience, and long-term value. With a range of housing options, Mulund is both a comfortable home and a smart investment choice.

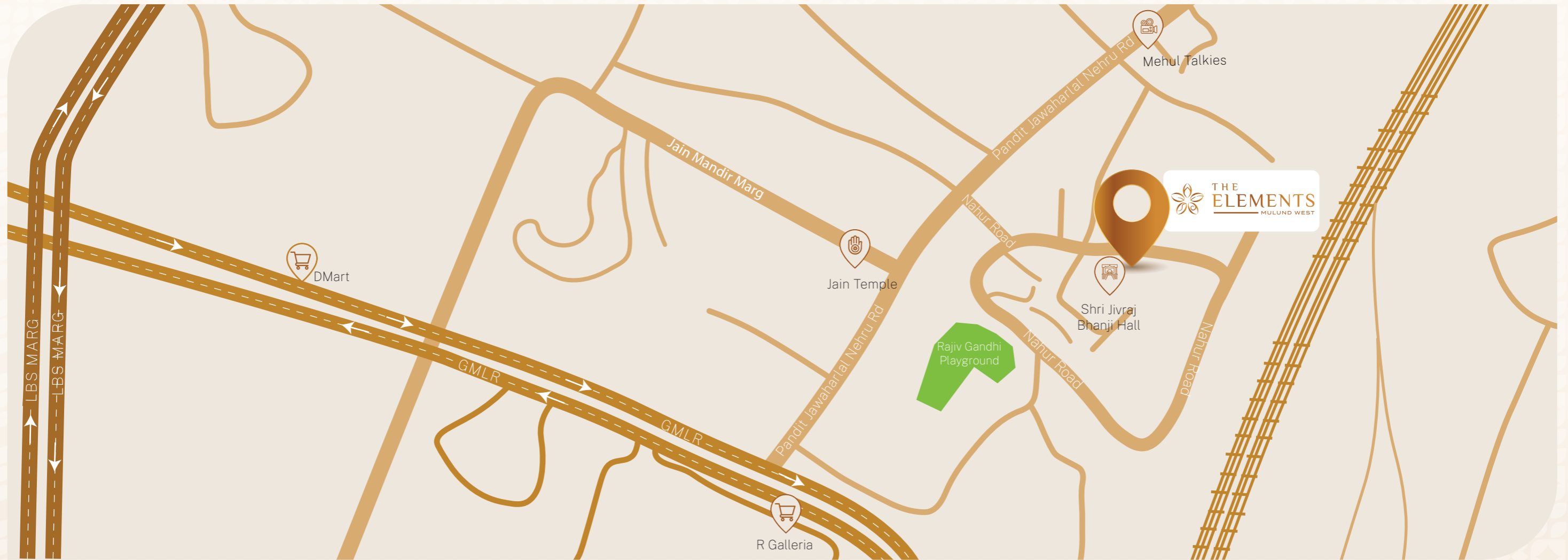


A panoramic view of the skyline of Mulund West and Bhandup from Yogi Hills inside SGNP, Mumbai" by Planemad, used under CC BY-SA 4.0 / Cropped from original. Available at: https://commons.wikimedia.org/wiki/File:Mulund_skyline_and_Vihar_Lake_from_Yogi_Hills.jpg

DISCLAIMER: Please read the full DISCLAIMER, provided at the last page of this advertisement/printed material/brochure.

Everywhere, Within Reach

Set in one of Mumbai's fastest-growing residential neighborhoods, The Elements places you at the center of everything that matters. From excellent city connections and thriving lifestyle hubs to serene green escapes, every convenience is close at hand. It's a location that balances urban ease with the calm of nature, so you can enjoy the best of both worlds every day.



MAP NOT TO SCALE

NATURAL

- Flamingo Bird Sanctuary - 7 min
- Yogi Hills - 10 min

UPCOMING INFRASTRUCTURE

- GMLR - 5 min
- Borivali-Thane Tunnel - 20 min
- Metro Line 4 - 5 min

COMMERCIAL

- Airoli - 10 min
- Powai - 15 min
- BKC - 35 min

CONNECTIVITY

- EEH - 5 min
- Mulund Station - 6 min
- Nahur Station - 7 min
- International Airport - 35 min

Neighbourhood



ACCESS CONNECTIVITY

- LBS Road
- Eastern Express Highway
- Nahur Station
- Upcoming Metro Line
- International Airport

CLINICS & HOSPITALS

- Fortis Hospital
- Lotus Multi-Speciality Hospital
- Hiranandani Hospital

KEY HUBS

- BKC
- SEEPZ
- Navi Mumbai
- Thane
- Goregaon (Via upcoming GMLR)

SCHOOLS & COLLEGES

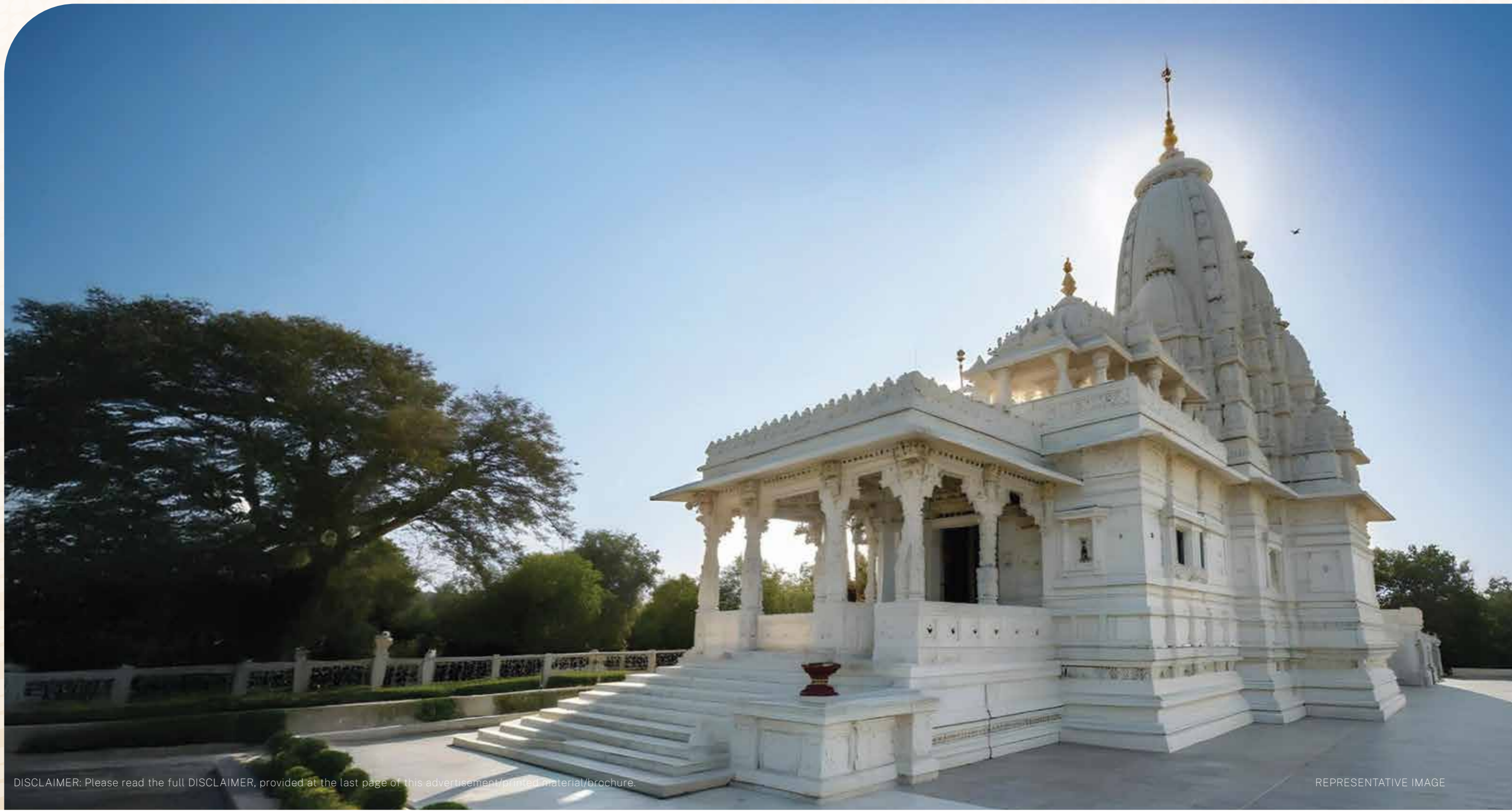
- Sri Sri Ravi Shankar School
- St. Mary's Convent School
- NES NPS School
- DAV International School

SHOPPING & ENTERTAINMENT

- R Galleria
- D-Mart
- R Mall Mulund
- The Ched

Close to Divinity

Just steps away, the Sarvodaya Parshwanath Jain Mandir offers stillness amidst the city's pace. It is a space of devotion, reflection, and continuity - where daily life finds balance in faith. Spirituality is part of your everyday life here.



High Street Living

High street living means never having to go far for what you love. At The Elements, everything from everyday necessities to weekend indulgences is right next to you. Vibrant living meets everyday convenience in this lively neighborhood.



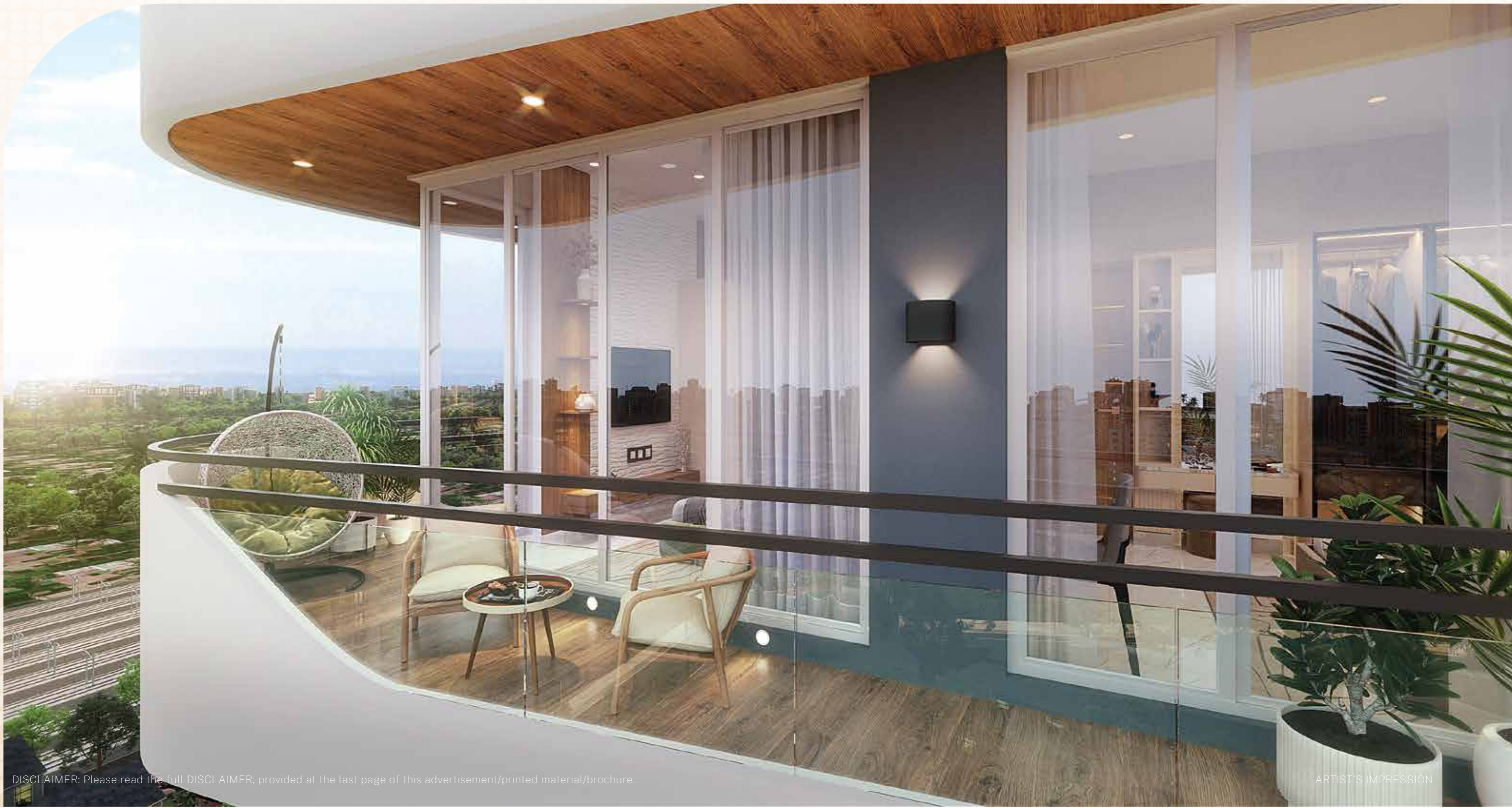
Wellness, Leisure, Comfort

At The Elements, every amenity is designed to bring balance into your daily life. From fitness zones and jogging tracks that keep you active, to children's play areas and open spaces that bring families together, and entertainment facilities for relaxation - there's something for everyone.



Horizons That Breathe With You

With 270° balconies in every residence, your mornings open up to endless views and your evenings fade into serene skylines. It's more than a balcony - it's your private window to the city's most breathtaking moments.



DISCLAIMER: Please read the full DISCLAIMER, provided at the last page of this advertisement/printed material/brochure.

ARTIST'S IMPRESSION

A Masterpiece of Art

The Elements, an architectural masterpiece, is an outstanding structure with artistic design, high-quality craftsmanship, and innovative features.

This unique modern architecture is a true reflection of nature and its 5 elements, available to every resident. This masterpiece is designed by Ar.Neena Thorat, who has designed every detail to create a home where life flows effortlessly, harmoniously and in perfect balance.

DISCLAIMER: Please read the full DISCLAIMER, provided at the last page of this advertisement/printed material/brochure.



ARTIST'S IMPRESSION

Remarkable Arrival

Arrive for an experience that's designed for you. Beautifully planned entrances and landscaped surroundings create a sense of arrival that's both grand and inviting.



Majestic Entrance

Step into a world of elegance. Double-height entry lobbies, opulent interiors, and swift elevator access ensure every arrival feels effortless, luxurious, and unforgettable.



Safe, Serene, Secure

Surrounded by greenery and amenities, our traffic-free podium is a secure, car-free environment where kids explore freely, elders enjoy peaceful walks, and families connect amidst landscaped greens.



Serenity, Right Outside

The adjoining landscaped garden offers a refreshing green haven where you can begin your mornings with calm, spend evenings in leisure, or simply pause to enjoy the serenity of open spaces.



Designing Life's Essence

Nestled in the heart of Mulund, this address blends comfort and sophistication. A lifestyle designed for those who value privacy, elegance, and meaningful experiences. Enjoy calm mornings, relaxed evenings, and a community that shares your sense of refinement. Every detail is crafted to enhance your living and make each day special.

PROJECT HIGHLIGHTS

- ✿ 2 Towers: Ground + 3 Level Podium + 15 Habitable Floors
- ✿ Building designed with exclusive butterfly layout
- ✿ Located near Nahur Road, Mulund West
- ✿ Superior 1, 2 & 3 BHK Sundeck homes (Jodi apartments on demand)
- ✿ Grand double-height entrance lobby
- ✿ Traffic-free podium level & adjoining landscape garden
- ✿ Modern 20+ lifestyle amenities across podium
- ✿ Swimming pool with deck
- ✿ L-shaped living & dining: Natural zoning for conversation, dining, and quiet moments-without partition
- ✿ Staff Toilet
- ✿ 2 elevators in each tower
- ✿ Dedicated surface car parking for each apartment
- ✿ Panoramic decks in every home with with 270° views
- ✿ 4 flats per floor, each with cross ventilation
- ✿ A dedicated substation for uninterrupted power supply
- ✿ Electric meter room for each building
- ✿ Flat slab construction
- ✿ Society office
- ✿ Indoor and outdoor activity zone: Carrom Board, Foosball, Billiards board, Cricket net Badminton court, Yoga area
- ✿ French Windows



NEEVIA GROUP

NEEVIA GROUP

THE ELEMENTS
BY NEEVIA GROUP

Dawn to Dusk

Life feels limitless with 270° balconies that open up to refreshing mornings, vibrant days, and calming skylines by night.



Where Leisure Flows into Balance

Whether it's a refreshing swim or a peaceful break on the deck, every splash and every pause becomes an experience in relaxation, creating the perfect balance in your lifestyle.



Wellness Rooted in Balance

The Elements offers 20+ lifestyle amenities suitable for every member in the family. A safe, traffic-free podium becomes the heart of the community, with spaces to recharge, play, and connect. Whether it's a morning swim, a fitness routine, a game with friends, or quiet moments in landscaped corners, every experience adds balance to your lifestyle.



Swimming Pool



Table Tennis



Gazebo



Pump Room



Fitness Center



Multipurpose Hall



Kids Play Area



Society Management Office



Yoga Area



Chess Pavilion



Recreational Garden



Gossip Area



Billiard Board



Jogging Track



Power Back



Carrom Board



Cricket Turf



Indoor Games



Electric Sub-Station



Foosball



THE ELEMENTS
BY NEEVIA GROUP

Homes Designed for Balance & Comfort

Every residence at The Elements is crafted to maximize space, light and air. No internal passage wastage ensures optimal and efficient use of space within each home. The L-shaped living and dining area enhances the visual appeal and offers natural light. With only 4 flats per floor, all units benefit from excellent cross ventilation.





Spaces Designed For The Way You Live

From expansive living areas to bright ventilated bedrooms, every space is carefully designed to combine practicality with aesthetic appeal, creating homes that are as comfortable as they are beautiful.



Safety, At Every Level



At The Elements, safety is built into every level of life. With dedicated security, CCTV monitoring, and smart access systems from your home to the project entrance, safety stays close at hand. Safety isn't an add-on here - it's built into every level of life.

FEATURES

• Apartment Level

- Video door phone
- Next gen locks

• Common Area

- 24x7 Security
- CCTV monitoring
- Central security control room

• Tower Level

- Security in the lobby
- Controlled access

• Parking Level

- CCTV monitoring

• Amenity Level

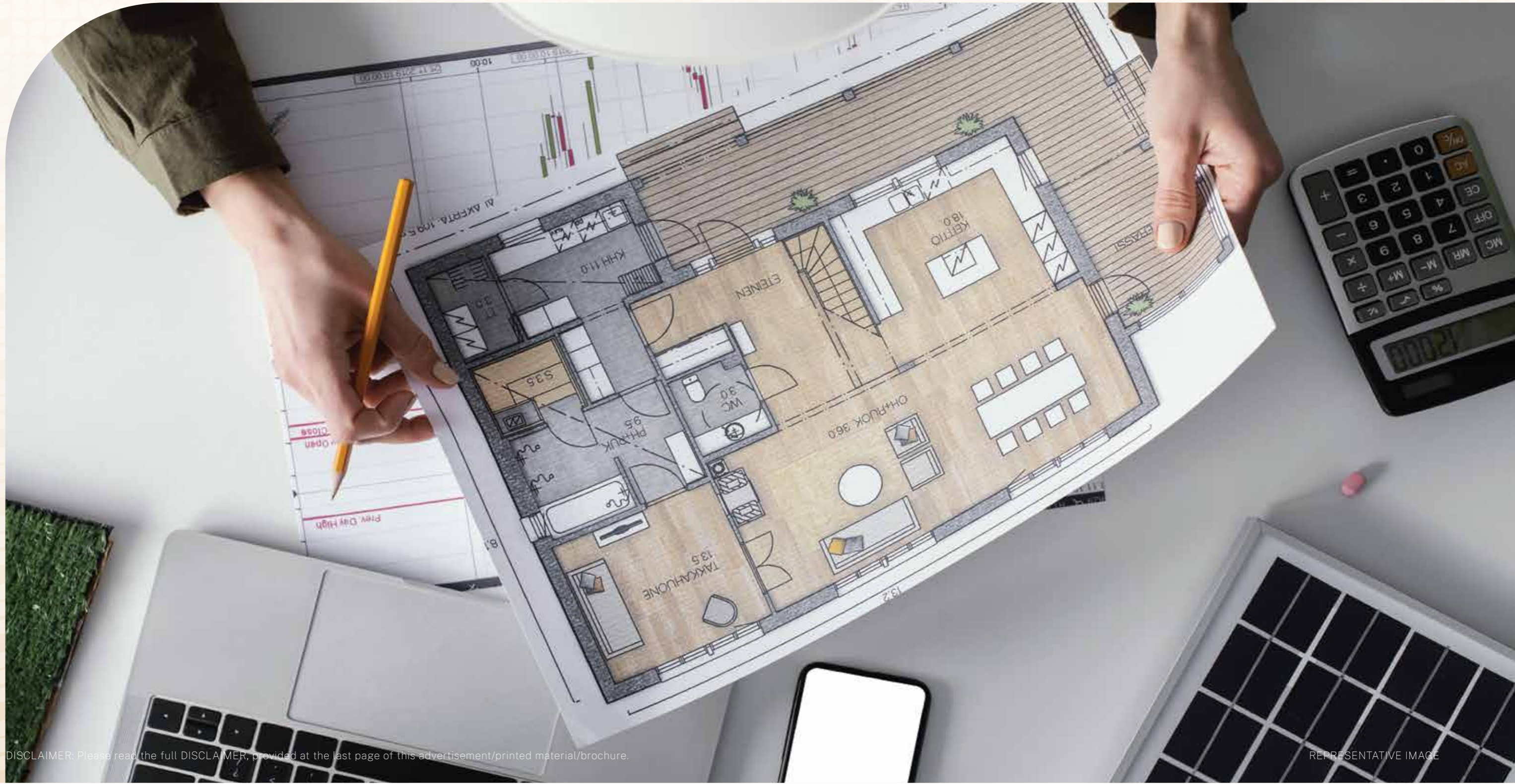
- Exclusively for residents
- CCTV monitoring

• Project Level

- RFID vehicular access
- 24x7 security

Layout Plans

Every plan, every angle, every space is thoughtfully shaped to ensure balance between privacy, comfort, and elegance.



Ground Floor Plan

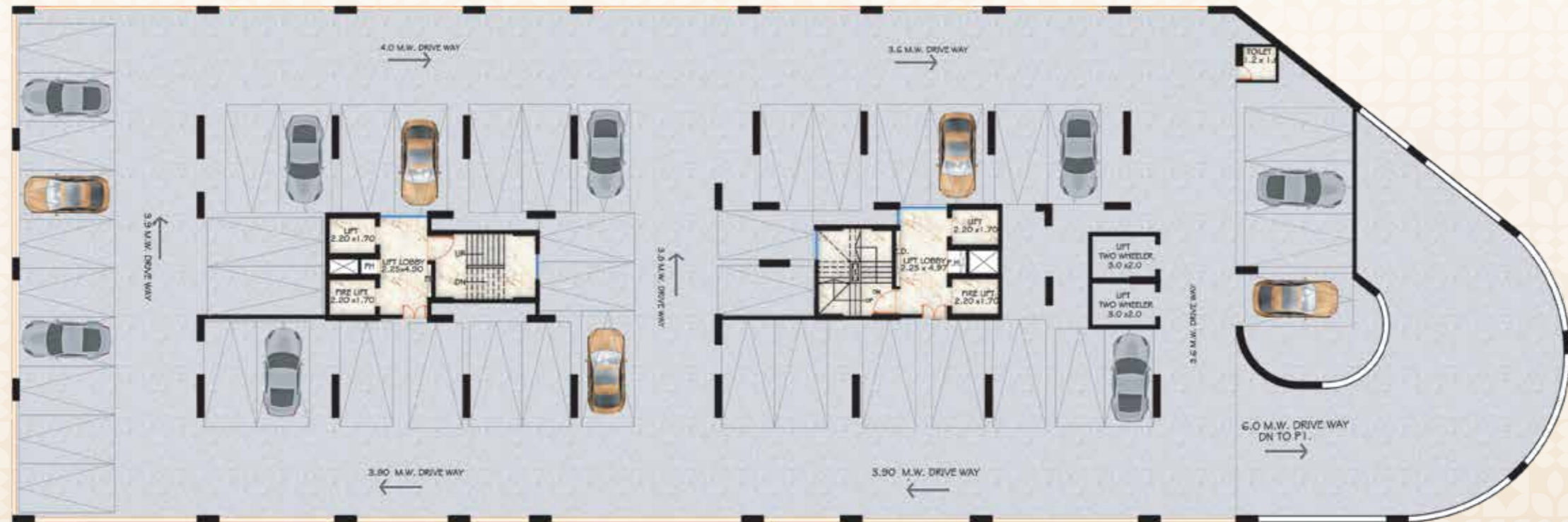
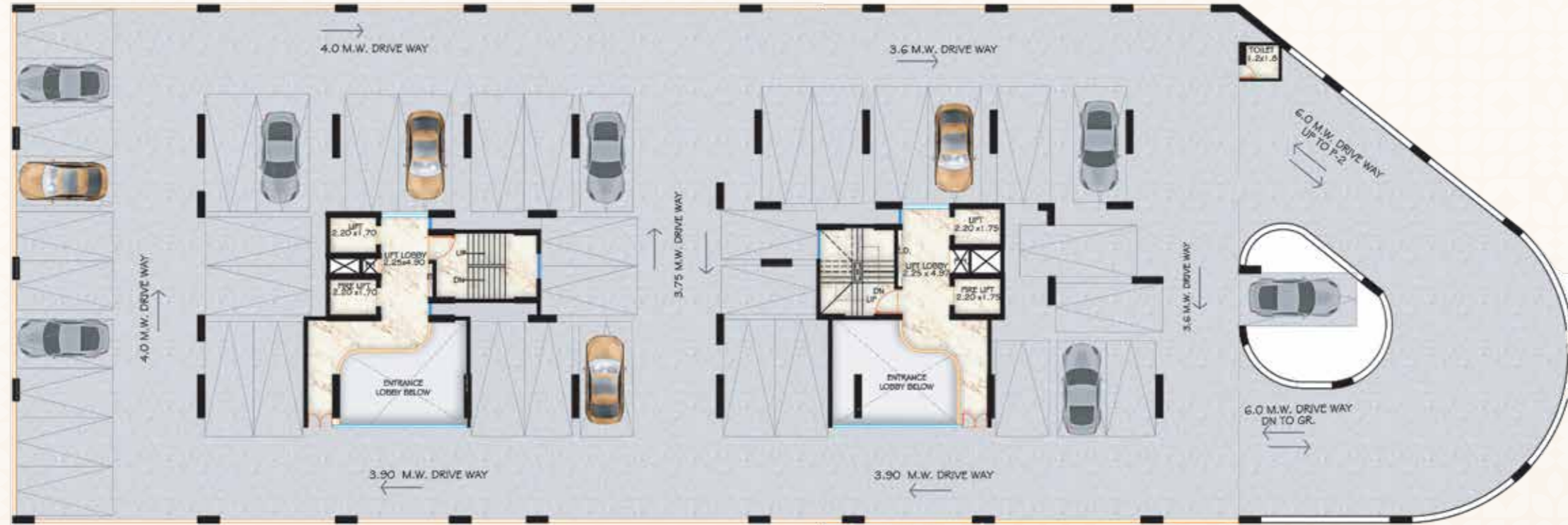


DISCLAIMER: All the illustrations are artist's impression. The Project is approved by BMC. These plans and sizes may vary ±2% are subjected to approved by BMC & Project Registered in MAHARERA. Above RERA carpet area mentioned in sq. m/ sq.ft. The sundeck, utility area mentioned in plan is not part of agreement for sale.



NOT TO SCALE

Parking Floor Plans



DISCLAIMER: All the illustrations are artist's impression. The Project is approved by BMC. These plans and sizes may vary $\pm 2\%$ are subjected to approved by BMC & Project Registered in MAHARERA. Above RERA carpet area mentioned in sq. m/ sq.ft. The sundeck, utility area mentioned in plan is not part of agreement for sale.



NOT TO SCALE

Balance Begins With Access

Dedicated surface car parking for each apartment, along with Ground + 2 levels of podium parking with a ramp, ensures convenience for every resident. With well-planned layouts, every arrival and departure is seamless.



Podium Level Plan

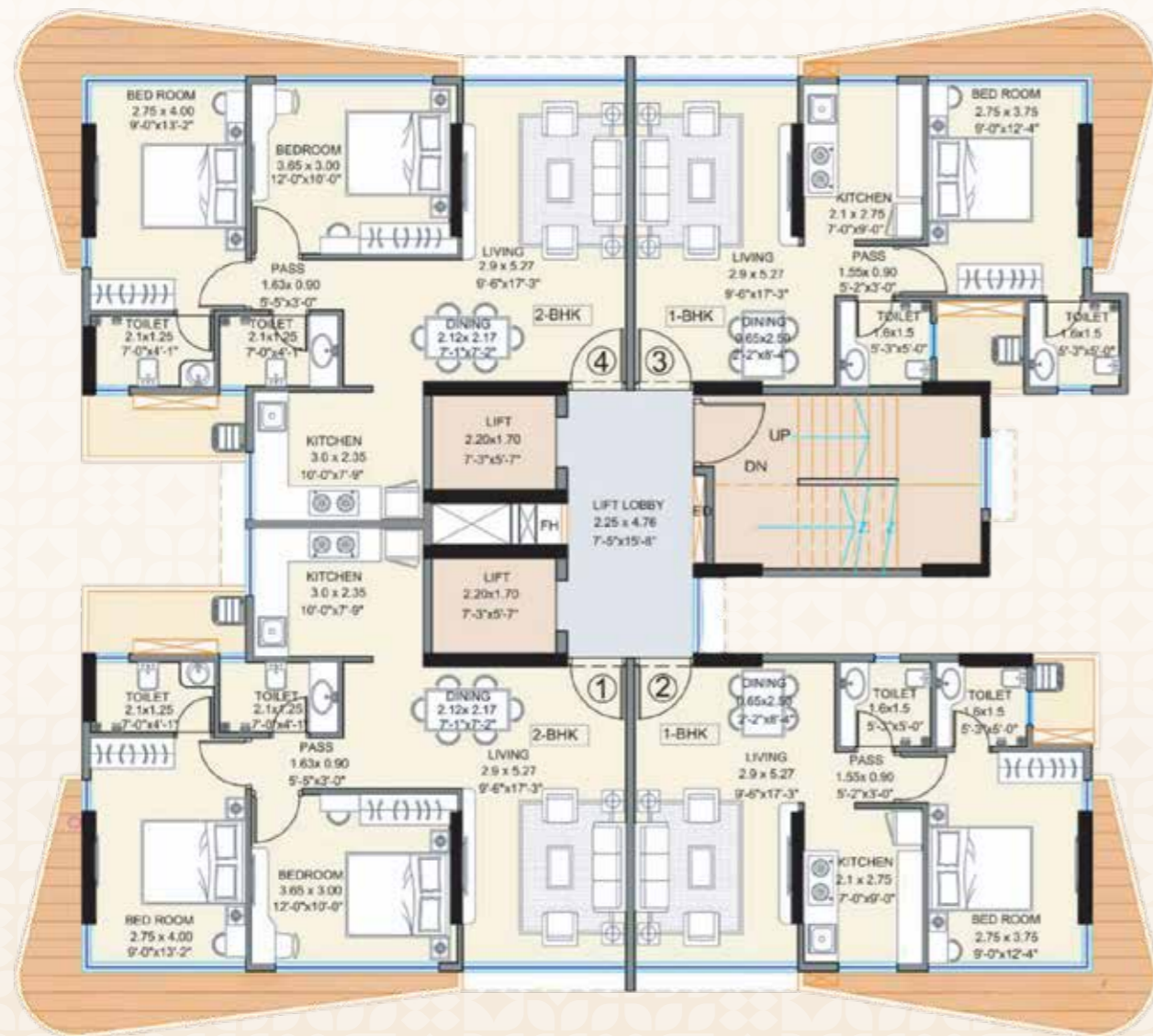


DISCLAIMER: All the illustrations are artist's impression. The Project is approved by BMC. These plans and sizes may vary $\pm 2\%$ are subjected to approved by BMC & Project Registered in MAHARERA. Above RERA carpet area mentioned in sq. m/ sq.ft. The sundeck, utility area mentioned in plan is not part of agreement for sale.



NOT TO SCALE

Typical Floor Plans



MULUND SANDESH



ANAND SANDESH



3D Unit Plans

1 BHK



2 BHK



3 BHK



DISCLAIMER: All the illustrations are artist's impression. The Project is approved by BMC. These plans and sizes may vary $\pm 2\%$ are subjected to approved by BMC & Project Registered in MAHARERA. Above RERA carpet area mentioned in sq. m/ sq.ft. The sundeck, utility area mentioned in plan is not part of agreement for sale.



NOT TO SCALE

Specifications That Define Quality



Built with superior materials and finished with exceptional craftsmanship, every detail reflects strength, elegance, and long-lasting value.

- Structure:
 - RCC frame structure designed for earthquake resistance as per current relevant is code for seismic zone III for a safe building structure.

- Elevation: A breathtaking and beautiful modern elevation.

Windows:

- Granite/marble on sill level of all window opening.
- UPVC / Powder Coated / Anodized Aluminum sliding window with glass.

Flooring:

- Vitrified tiles of Somani, Kajaria, Nitco, RAK or equivalent brand in hall, bedroom, kitchen & passage with 4" skirting
- Designer ceramic tiles in toilet.

- Masonry: 150 mm thick external walls and 100 mm internal walls.

- Plaster: External plaster shall be sand faced plaster & Internal gypsum plaster on walls.

- Kitchen: Granite kitchen platform with stainless steel sink. Designer colored tiles above platform on 2 ft. ht. walls.

Electrification:

- Concealed copper wiring with ELCB & MCB protection.
- Single three-phase connection.
- Modular switches, plug points of Anchor, GM or equivalent.
- Telephone points in living room & Video Door phone.
- Cable TV wiring and Intercom Connection points.

- Mahanagar Gas Connection: Mahanagar gas connection point to kitchen (subject to availability).

- Painting : Internal paint and OBD External paint apex.

- Doors: All flush doors with standard fittings.

- Water proofing: Terrace lift M/C room slab, bathroom, WC, sink, UG & OH tank.

- Lift: Kone, Otis or Equivalent as per PWD requirement.

Common Facilities:

- Well-designed entrance lobby with name plates.
- Paver tile pavement in entire compound except garden area
- Society office and fitness centre (Subject to approval from BMC)
- Separate staff washrooms.
- Anti-termite treatment.
- Rain water harvesting system.

Plumbing:

- Sanitary fittings in toilets of Jaguar, Hindware or equivalent
- Concealed UPVC pipes.
- European style WC (wall mounted) & washbasins of Jaguar or equivalent brand
- Vertical drainage pipes shall be of PVC
- Provision for washing machine with inlets & outlet points.

Shaping More Than Skylines

NEEVIA GROUP

Neevia Group has been redefining skylines for decades through landmark redevelopment projects, now led by its second generation of entrepreneurs. With millions of square feet delivered, both independently and with esteemed partners, we've built a legacy of trust, innovation, and excellence. Guided by a vision to elevate everyday living, we create homes that blend architectural brilliance with uncompromising quality crafting experiences that stand the test of time.



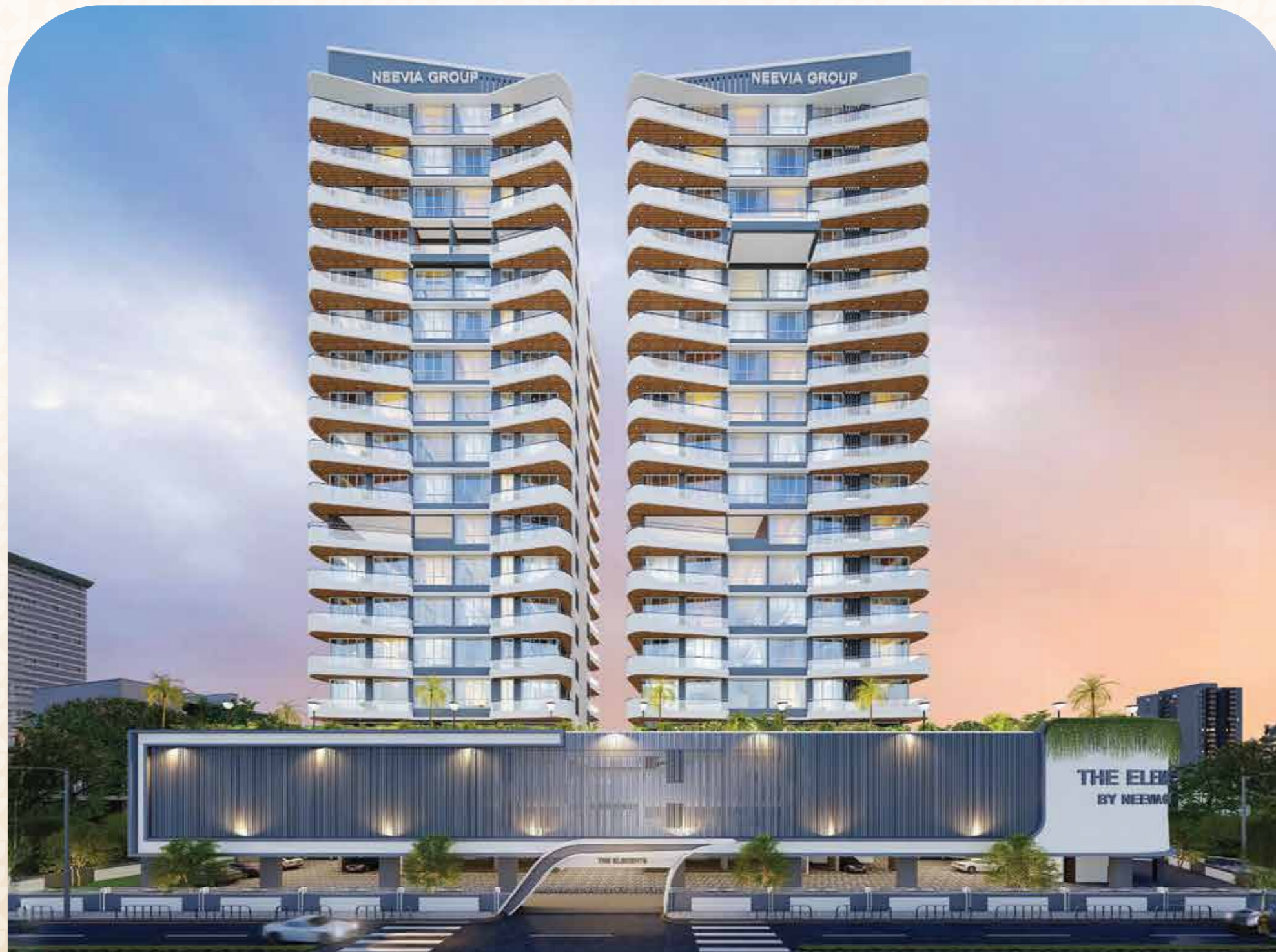
The Elements of Architect's Vision

Two towers, One boutique address.

Here living is not defined by city outside, but elements within - Earth, Water, Fire, Air and Space. At The Elements, life finds its balance.

The apartments are designed with an exclusive butterfly layout, ensuring uniqueness and elegance. Every apartment includes a private deck area, ideal for relaxation and outdoor seating.

Every detail is designed to create a home where life flows effortlessly, harmoniously and in perfect balance.



A Project developed by



Site Address : The Elements, Sales Office, CTS No. 603/A/2, 603/A/1/2, Off J.N. Road, Nahur Road, Mulund (W), Mumbai 400080

Regd. Address : 416, Shramjivan B-5, Truck Terminal, Opp. Wadala RTO, Wadala (E), Mumbai 400 037

Contact : +91-88288 00124

Architect



RCC Consultant



The Elements is registered with MahaRERA under registration number : P51800076733, and is available on website <https://maharera.maharashtra.gov.in/under-registered-projects>.

Disclaimer : This advertisement/printed material does not constitute an offer or contract of any nature whatsoever between the promoters/developers and the recipient. All the information provided in this material shall be subject to and governed by the terms and conditions of the agreement for sale to be entered between the parties. Information in this brochure with respect to the project is indicative only.

Artist's impressions, products, features, furniture, floor coverings, curtains, mirrors, wall hangings, light fittings, furnishings, pictures, images, plans, drawings, amenities, dimensions, elevations etc., are subject to the approval from the competent authorities and are shown for illustrations and reference only. All journey times stated are approximate. Any reliance on the provided information is strictly at user's risk. The information, size, figures, images, colour, plans etc contained in this advertisement/printed material is for general guidance only and can vary based on the project needs. No photos have been shot at site. The layout are MahaRera approved plans and specifications as of date but these plans may vary and are subject to change. An independent investigation and analysis of the product, developer and the project may be undertaken by you before investing/ purchasing the property. The real estate agent acts only as a distributor for facilitating the sale of units in the project and not in any other capacity and is not making any representations or warranties, express or implied in respect of the project.

